



LED LIGHTING SOLUTIONS



WE ARE IMAGE ARCH LIGHTING

Founded in 2009, Image Arch Lighting manufactures an extensive product line of highly efficient LED luminaires. Combining over 50 years of Professional manufacturing and electrical contracting expertise, the Image Arch founders have crafted a unique product portfolio that blends innovative product design with seamless installation features. Driven by evolving energy codes and higher standards of design, the quality and efficacy of lighting has become an integral part of the overall project design. At Image Arch Lighting, we are committed to offering the highest-quality product possible that utilizes the latest in technology and controls.

At our core value, we are a customer-centric company and we thrive at quick shipments and expedited orders. Our proprietary Driver Forward Assembly allows for the pre-shipment of our rough-in housings to provide for quick installation and keep the project moving forward. Our Quick Connect System includes line voltage power and 0-10V control wiring to speed up the installation process. LED modules and drivers are easily installed after the ceiling finishing is complete. We are experts in customer accommodation and offer many standard or custom prefabricated whips that allow for the ultimate labor efficiency during field installation.



Luminaire Families

Standardized families of downlights offer the ultimate in consistency and options for your projects

Retrofit Downlights

Standardized retrofit downlight options offering the ultimate in efficacy and ease of installation

Driver Forward Assembly

Expedite lead times with stocked and ready-to-go rough-in frames. Driver and LED modules easily install later.

VERTICAL MARKETS WE SERVE



Commercial

We offer a variety of luminaires specifically designed for the commercial space. Implementing a good, better, best product portfolio, specifiers can easily choose luminaires to accommodate their budget.



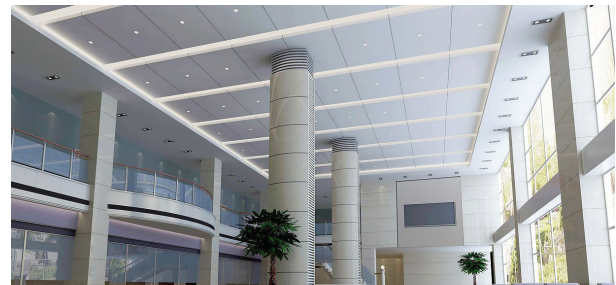
Retail

Image Arch offers several downlights and recessed multiples that are a perfect match for the retail space. Offering the highest quality and performance, luminaires are available with a variety of optical distributions and high CRI options.



Residential

Value engineering quick-ship luminaires are available in our residential product portfolio. Round and square downlights are available.



Industrial

Image Arch offers a variety of fixtures suitable for the industrial market. Robust design integrated with high-quality components deliver the ultimate in reliability and performance.

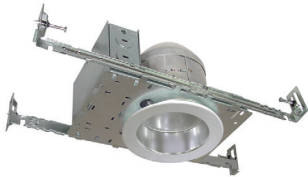
Pre-Fab & Custom

We specialize in prefabricated modifications to standardized products to expedite installation

- 4** Product Family Overview
- 5** Design Partners
- 6** Driver Forward Assembly
- 7** Driver-on-Board
- 8** Downlights Overview
- 10** Downlights
- 12** Cylinders / Multiples / Exterior
- 14** Image Rail

IT'S ALL IN THE FAMILY

Image Arch offers a variety of downlight families designed to maintain consistency across your project. Each product family utilizes similar components and feature sets across all platforms. This comprehensive collection of luminaires offers a magnitude of aperture and frame-in options. From small aperture to large aperture high lumen downlights, Image Arch has you covered for all your lighting needs.



MLR - RESIDENTIAL

The Image Arch residential downlight series delivers round and square aperture downlights in a variety of aperture sizes. IC-rated and Title 24-compliant downlights are offered throughout the portfolio of products. The all-new M4 downlight features an inherent 2-hour fire rating and is ideal for multi-family housing projects.



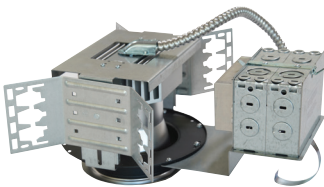
MCLC - LIGHT COMMERCIAL

Ideal for budget-sensitive commercial projects, the MCLC delivers on performance and cost. Product line is exclusively based on the Driver-on-Board (DOB) platform and features direct AC input, resulting in the elimination of the external power supply. MCLC is available in 4", 6" and 8" apertures with a retrofit or new construction frame-in.



MCLR - ARCHITECTURAL

The MCLR series is a high-performance architectural-grade downlight that is available with multiple frame-in options. Available in 4", 6" and 8" apertures, the MCLR features narrow, medium flood and wide flood optics that are specified at the time of order. High-quality spec-grade reflector offers 50-degree cutoff and minimizes glare while maximizing performance. Retrofit, DOB and Driver Forward Assembly options are available.



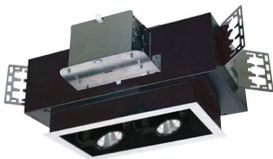
MCLR-HL - ARCHITECTURAL HIGH LUMEN

The MCLR-HL series is a high lumen specification-grade downlight intended to stand on its own. Designed for illuminating spaces with higher ceilings, the MCLR-HL is available in 4", 6" and 8" apertures. Precision optics allow for high-performance lighting ranging from uniform general illumination to high-contrast spot lighting.



MAL - ARIA SPECIFICATION GRADE

The Aria series features downlights with apertures ranging from 2 inches to 8 inches. Aria delivers the ultimate collection of downlights, adjustables and wall washers. Designed for a magnitude of applications, Aria is ideally suited for high-end residential, commercial and retail projects.



MCLD - RECESSED MULTIPLES

The MCLD series of recessed multiples is available in one, two or three lamp configurations and is offered in DOB or standard driver-based platforms. Ideal for retail projects, the MCLD is available with multiple optic distributions and features high CRI LEDs when specified.

DESIGN PARTNERS

Quality is our number one commitment to our customers. We only partner with component manufacturers that share in this same core value. Partnering with reputable companies allows Image Arch to be flexible on our product offerings and satisfy the majority of specifications. Each design partner is carefully evaluated and selected based on our principles of reliability and longevity. As technology progresses and evolves, you can count on Image Arch to always offer the best-in-class components inherent in our luminaires.

LED MODULES & COBs



People Centric Lighting

DRIVERS



EMERGENCY BACKUP



CONTROLS



DRIVER FORWARD ASSEMBLY

EXCLUSIVELY AVAILABLE ON MCLR DOWNLIGHTS

QUICK CONNECT BOX
DRIVER AND 0-10V
QUICK CONNECT

UNIVERSAL DRIVER
120-277V 0-10V & TRIAC 1% DIMMING



SERVICEABILITY
LED LIGHT ENGINE AND DRIVER ARE EASILY
ACCESSED BELOW CEILING AND ARE
REMOVED AS ONE SINGLE UNIT

FIRST: INSTALL ROUGH-IN SECOND: INSTALL LED, DRIVER AND REFLECTOR

We have extensive experience in electrical contracting. We understand how it works in the field and we have designed our product line to accommodate the challenges contractors face every day. Our proprietary Driver Forward Assembly creates a win-win scenario for the manufacturer, contractor and owner. We inventory high quantities of rough-ins that are ready for immediate shipment. Rough-ins can be quickly installed, minimizing your installation overhead and maximizing your profit. Driver Forward Assembly downlights feature universal triac and 0-10V dimming to 1%.



DOB DRIVER-ON-BOARD LED

EXCLUSIVELY AVAILABLE ON MCLC AND MCLR DOWNLIGHTS

AC INPUT LED
DIRECT AC INPUT LED MODULE
ALLOWS FOR UNIVERSAL 120-277V
AND UNIVERSAL 0-10V AND TRIAC
DIMMING

EXTENDED FLEX
XTRA LONG EXTENDED FLEX TO
ALLOW FOR EASY INSTALL AND
SERVICE

QUICK CONNECT BOX
LINE VOLTAGE POWER AND 0-10V
QUICK CONNECT



DIRECT AC INPUT LED...NO DRIVER REQUIRED UNIVERSAL INPUT 120-277V UNIVERSAL DIMMING 0-10V & TRIAC

Simplify your project by utilizing the MCLC and MCLR DOB Series downlights. Driver-on-Board downlights require direct AC input and eliminate the need for an external power supply. Designed to accommodate budget-sensitive projects, DOB downlights offer universal triac and 0-10V dimming. Smooth dimming to 10% is standard.



MCLC

LIGHT COMMERCIAL DOWNLIGHTS



FEATURES

- Light Commercial LED Downlight
- Standard DOB platform
- Standard with universal 0-10V & triac 5% dimming
- Available options include retrofit, commercial flat frame and IC-rated frame-in

LED SPECIFICATIONS

- 2700K, 3000K, 3500K AND 4000K
- 95 CRI
- >50,000 HOURS L70
- 2-step MacAdam Ellipse Binning

POWER SUPPLY

- Direct on-board AC input 120-277V

DIMMING

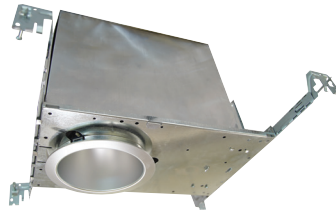
- 0-10V Dimming 10%
- Triac 10%



RETROFIT



FLAT FRAME-IN



IC-RATED

MCLR

ARCHITECTURAL DOWNLIGHTS



FEATURES

- Architectural-Grade LED Downlight
- Available with Driver Forward Assembly
- High-quality 55-degree cutoff
- Standard with universal 0-10V & triac 1% dimming
- Available with commercial flat frame, architectural frame and IC-rate frame-in
- Retrofit or new construction options
- Interchangeable optics

LED SPECIFICATIONS

- 2700K, 3000K, 3500K AND 4000K
- 95 CRI
- >50,000 HOURS L70
- 2-step MacAdam Ellipse Binning

POWER SUPPLY

- 120V or 277V input; Power factor >.9, 50/60Hz
- This product complies with IEEE C62.41 for surge endurance up to 2.5KV

DIMMING

- 0-10V Dimming 1%
- Triac 1% (120V only)
- Lutron Hi-Lume 1% EcoSystem



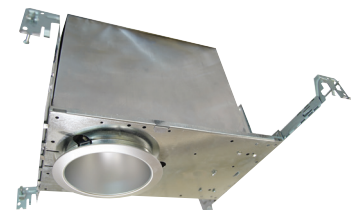
RETROFIT



ARCHITECTURAL FRAME-IN



FLAT FRAME-IN

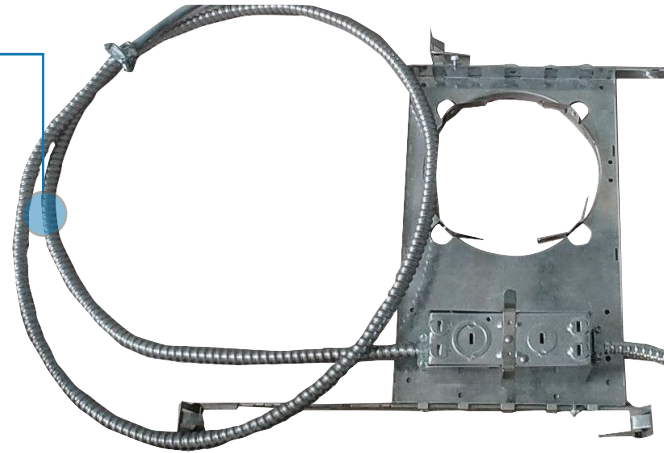


IC-RATED

PRE-FAB ASSEMBLY ON-DEMAND

CUSTOMIZED TO SPECIFICATION

We are specialists in modifying luminaires to meet your specification to allow for ease of field installation. We can quickly accommodate requests to install various lengths of whips that directly impact your overall labor expense. Custom or standard lengths are available and all options are available with expedited shipment.



MCLR-HL ARCHITECTURAL DOWNLIGHTS HIGH LUMEN



FEATURES

- Architectural-Grade LED Downlight
- High-quality 55-degree cutoff
- Standard with universal 0-10V & triac 1% dimming
- Available with architectural frame
- New construction only architectural-grade frame-in
- Interchangeable optics

LED SPECIFICATIONS

- 2700K, 3000K, 3500K AND 4000K
- 95 CRI
- >50,000 HOURS L70
- 2-step MacAdam Ellipse Binning

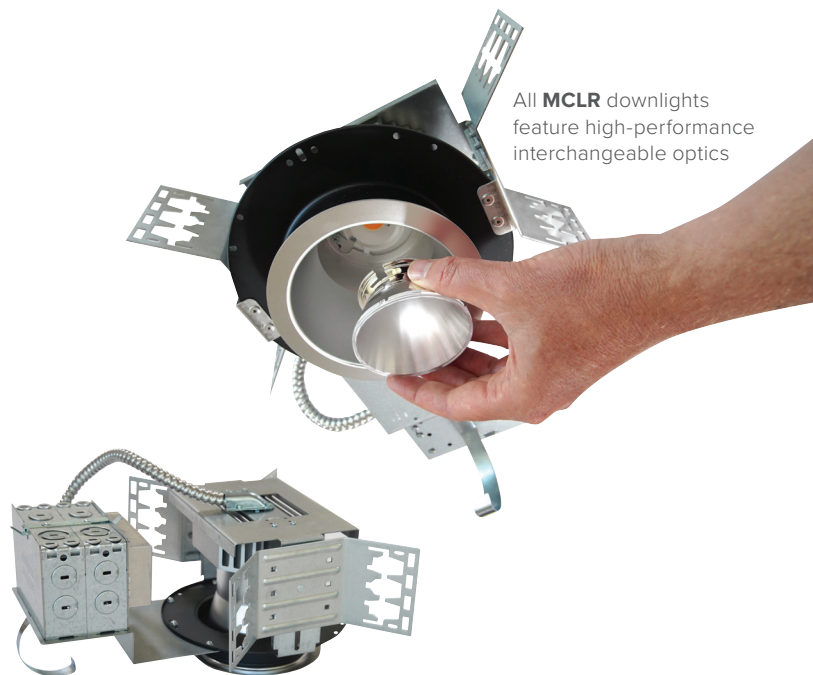
POWER SUPPLY

- 120V or 277V input; Power factor >.9, 50/60Hz
- This product complies with IEEE C62.41 for surge endurance up to 2.5KV

DIMMING

- 0-10V Dimming 1%
- Triac 1% (120V only)
- Lutron Hi-Lume 1% EcoSystem

All MCLR downlights feature high-performance interchangeable optics



ARCHITECTURAL FRAME-IN

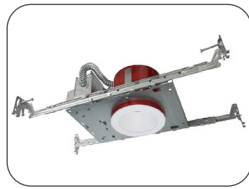
RESIDENTIAL LED DOWNLIGHTS



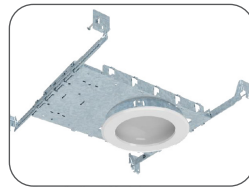
M3/MLR3



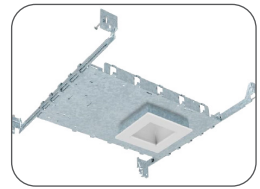
M4/MLR4



M-41FR/ML4



M41/M4DL



M41S/M4DLS



MLR4S



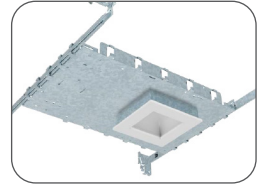
MLR56



MLR6



M61/M6DL



M61S/M6DLS



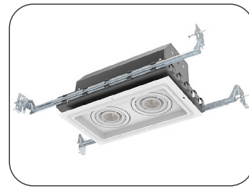
MD4



MDLS



MDEL



MRCL



M4X4

LIGHT COMMERCIAL LED DOWNLIGHTS



MCLR4



MCLR6



MCLR8



MCLR9



MCLR-DOB



MCLR6-DOB



MCLR8-DOB



MCLR-DOB



MCLC4



MCLC6



MCLC8



M410/MCLR4



M610/MCLR6



M810/MCLR8



M910/MCLR9



M410/MCLR4-DOB



M610/MCLR6-DOB



M810/MCLR8-DOB



M910/MCLR9-DOB



M410/MCLC4

ARCHITECTURAL LED DOWNLIGHTS



M610/MCLC6



M810/MCLC8



M410IC/MCLR4



M610IC/MCLR6



M810IC/MCLR8



M400/MCLR4



M600/MCLR6



M800/MCLR8



M900/MCLR9



M400R/MCLR4



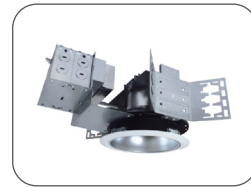
M600R/MCLR6



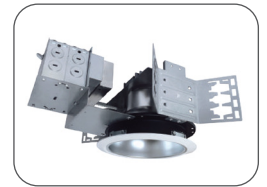
M800R/MCLR8



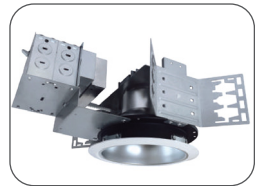
M900R/MCLR9



M400/MCLR4-HL

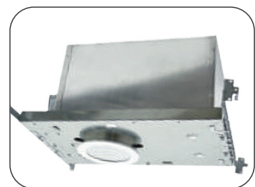


M600/MCLR6-HL



MCLR8-HL

ARIA SERIES SPECIFICATION-GRADE DOWNLIGHTS



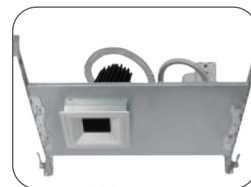
MAL2



MAL21



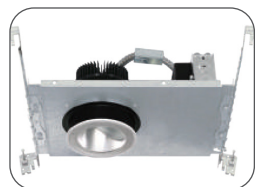
MAL202



MAL2021



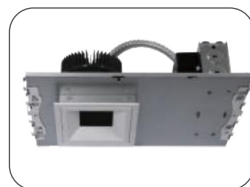
MAL35



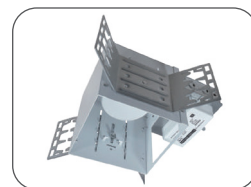
MAL351



MAL404



MAL4041



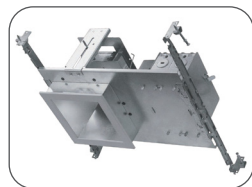
MAL505



MAL5051



MAL61



MAL6061



MAL-81



MAL-1112

CYLINDERS SURFACE, PENDANT AND WALL MOUNT



MCL6



MCL8

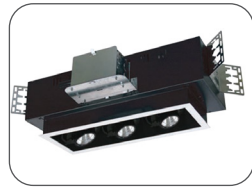


MCL6-DOB

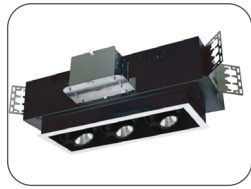


MCL8-DOB

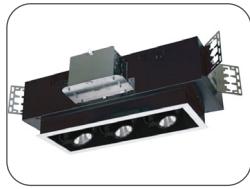
RECESSED MULTIPLES LED MULTIPLES



MCLD-N



MCLD-M



MCLD-DOB-N



MCLDR-DOB

EXTERIOR CYLINDERS, WALL MOUNT AND STEP LIGHTS



MLP-2



MCL3



MCL3-UD



MCL3



MCL4-D

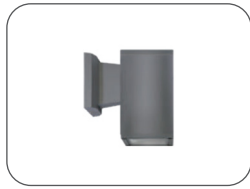


MCL4-UD-DOB: UP/DOWN

MCL4-UD



MCL4



MCL4D



MSL4-UD



MSL4



MWCD-1008



MWCD-1010



MWCD-1012



MWCD-1014



MTL-SL



MLS-200



MLSS-200



IMAGE RAIL

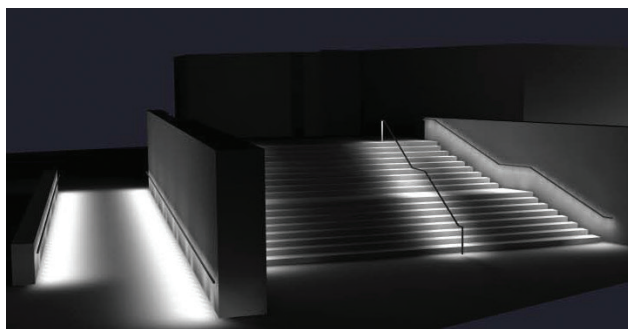
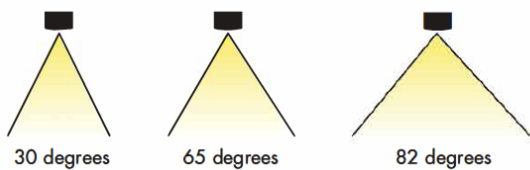
Image Architectural Handrail incorporates the architectural features and structures of a project, making it possible for architects and engineers to design and illuminate areas without using additional light sources for egress and accent lighting, with the benefit of efficiently reducing lighting costs at the same time. LED (Light-Emitting Diode) products use up to 70% less energy than fluorescent lamps, are highly durable, are able to withstand cold environments, contain no mercury, and feature our “Cool Power” making them safe choices for areas where people come into contact with lighting.

With six times the expected lifetime of a fluorescent lamp, LED systems require less maintenance and won't suffer from expensive re-lamping trips to the field. Our Handrail has flexible power feeds so normal and emergency feeds can be remotely installed in a building's electrical or maintenance room, along with our controls up to 300 feet away, reducing unnecessary and unsightly pull boxes. Our Handrail combines our various metal options with lighting for safety and security into one functional element, and we are ADA compliant for interior and exterior applications. This product is built and manufactured in the USA and falls under the “Buy American Act.”



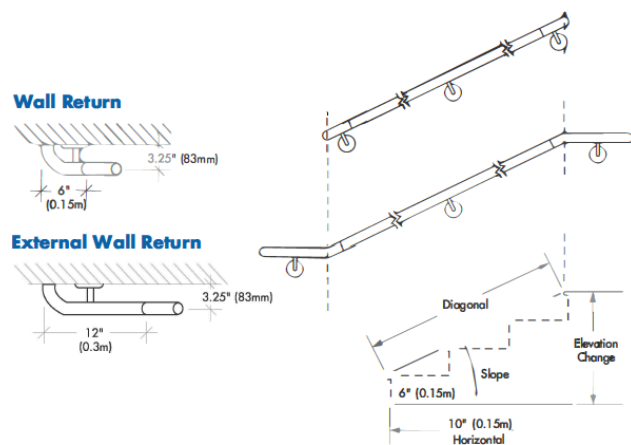
ADVANCED OPTICAL SYSTEM

Four emitting angle options for precise light. Wide lateral distribution and advanced optical design provides uniform light distribution. Image Arch can assist on photometric layouts and calculations to comply with life safety codes.



STAIRS OR RAMPS

Stairs and Ramp handrail wall returns may be specified with a 12" extension. Image Arch Lighting requires field-verified “horizontal” and “diagonal” dimensions in order to generate shop drawings. Additional field dimensions may be required depending on the complexity of the handrail design.





LED PODs NOW AVAILABLE

Versatile light pods for virtually any application, LEDpod is especially popular with handrails. Able to illuminate with either symmetrical or asymmetric distribution without the need to tilt the handrail, these pods eliminate unwanted and disturbing glare.



LEDpod 1.66" 1.50" - 1.66" RAIL

Color: 2700K, 3000K, 3500K, 4000K
CRI: 80-85
Binning: 3 MacAdam Steps
Driver: 350 – 500mA Constant Current
Control: DALI, 0-10V, DMX
Distribution: Symmetrical, Asymmetrical



LEDpod SQUARE 1.50" SQUARE RAIL

Color: 2700K, 3000K, 3500K, 4000K
CRI: 80-85
Binning: 3 MacAdam Steps
Driver: 350 – 500mA Constant Current
Control: DALI, 0-10V, DMX
Distribution: Symmetrical, Asymmetrical



LEDpod 1.9" 1.9" RAIL

Color: 2700K, 3000K, 3500K, 4000K
CRI: 80-85
Binning: 3 MacAdam Steps
Driver: 350 – 500mA Constant Current
Control: DALI, 0-10V, DMX
Distribution: Symmetrical, Asymmetrical

IMAGE RAIL FEATURES

NO HEAT OR UV IN THE LIGHT BEAM

With no heat in the light beam, the fixture lens remains much cooler than halogen sources, allowing safe and 'burn free' operation.

0 TO 100% DIGITAL DIMMING

Connection with LightLink Series allows simple and seamless integration to most of today's conventional dimming systems.

COOL POWER THERMAL MANAGEMENT

Active Thermal Management (ATM) continuously monitors, and when required, thermally regulates the fixture. If for any reason the fixture begins to overheat, ATM will reduce the LED power level in order to protect the LED source. Smooth dimming ensures this background task does not interfere with normal operation of the Handrail.

ACCUWHITE™

AccuWhite technology allows integration of fixtures to traditional applications without sacrifice in color temperature (CCT) or color rendering (CRI). AccuWhite ensures accurate and consistent color matching from handrail, section to section. This will maintain an even light flow without shadows. This conforms to ANSI binding standards.

SMARTDRIVER™ INTEGRATED

SmartDriver technology is integrated directly inside of every Handrail. Connect the V-Line to a wide range of voltages without sacrificing light output or lifetime. No external drivers are required and wiring is made simple.

LIGHTLINK™ COMPATIBLE

LightLink controllers represent the next generation in lighting control and connectivity. LightLink modules provide seamless integration of today's commercial and residential dimming systems through a wide variety of desirable interfaces.

REMOTE POWER SUPPLIES

Image Rail utilizes remote constant voltage drivers to power the handrail. With the capability to install power supplies up to 250 feet, remote drivers allow for installation in an indoor electrical room. Additionally, remote power supplies ensure safety by eliminating the liability of high voltage through the handrail.



IMAGE ARCH LIGHTING

10064 Dawson Canyon Road
Corona, CA 92883

www.imagearchlighting.com

T: (888) 220-1882 / (714) 695-0000

E: sales@imagearchlighting.com

Printed in the USA

©2020 IMAGE ARCH LIGHTING. All rights reserved.

IMAGE ARCH LIGHTING reserves the right to change the technical specifications of its products at any time without notice.