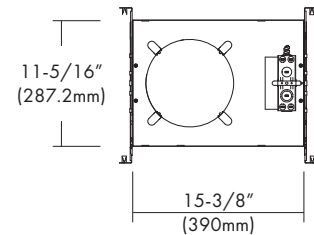
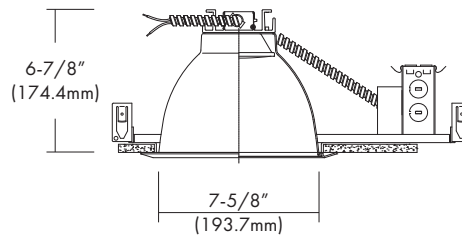


M810/MCLR8W

120V-277VAC LED 8", Non-IC, Commercial Flat Frame-in Kit
Down Light with interchangeable Reflector Trims

Catalog		Type
Project		Date
Prepared		

8" LED Commercial Flat Frame-in Kit



Ceiling Cut-out : 8"-1/8"

DESCRIPTION

The **M810/MCLR8W** is an 8" LED, Non-IC Commercial Flat Frame-in Kit and is available with multiple Trim styles. Designed for use in non-insulated ceilings, Insulation material must be kept a minimum of 3" from fixture. Available with a 14W, 23W, 30W or 45W high efficacy LED engine and universal, dimmable drivers. The special optical diffuser produces high lumen transmission and even illumination. Suitable for Wet Locations.

DESIGN FEATURES

Mounting Frame

- Galvanized steel construction.
- Housing adjusts for ceilings up to 1-1/4" thick.

LED Module & Trim

- Painted, extruded aluminum heat sink designed to facilitate efficient heat dissipation for superior thermal management and reliability.
- LED engine includes LED, heat sink and lens assembly.
- Heavy gauge aluminum reflector anodized in clear haze or white paint finishes. Multiple trim styles and finishes are available.

LED Driver

- Universal, 120~277V input, high efficacy drivers with dimming capability by ① a Triac 120V low voltage electronic dimmer switches or ② 0-10V, Triac & ELV dimmer switches.
- Drivers feature power factor >.90, THD <20% with integral thermal protection to sense over temperature or electrical issues.
- Driver mounts externally to the module to allow future replacement or upgrading if desired.
- Optional Lutron Hi-lume A-Series, LED drivers and EcoSystem 5-Series LED drivers are available. Lutron drivers provide flicker-free, smooth, continuous dimming down to 1% for Hi-lume and 5% for EcoSystem. (Contact factory for dimming system requirements)

Junction Box

- Listed for through branch circuit wiring. (Max.8 No 12 AWG 90°C branch circuit conductors: 4 in, 4 out)
- (5) 1/2" knockouts with pry-out slots and (4) knockouts with Romex cable clamps.
- Ground wire provided on J-box.

Bar Hangers

- 24" Bar Hangers provide stability and support on joists and T-Bar Grid ceilings.
- Housing can be positioned at any point within 24" joist spacing.
- Score lines allow easy "bend & snap-off" shortening for 12" joist spacing.

Options

- Emergency battery back-up : Available in mounted to fixture or remote, adjacent to luminaire (consult with factory for space requirements).

Limited Warranty

- LED Module: 5 years/50K hours
- Product/Driver: 3 years

Listing

- cETLus Wet Location
- ENERGY STAR
- California Title 24

SPECIFICATION				
Input Voltage	120-277VAC			
Wattage (+/-5%)	14W	23W	30W	45W
Lumen (+/-5%)	1,331	2,180	2,700	4,135
Efficacy (LPW)	95.1	94.8	93.1	91.9
Beam Angle	75°	75.5°	77°	76.2°
CRI (Typical)	80, 90			
CCT (Color +/-5%)	2700K, 3000K, 3500K, 4000K			
Dimming	Triac (Standard), 0-10V			
LED Module	5 yr/50K hr			
Environment	Wet Location			

Triac Approved Dimmers
* Lutron: NovaT (Ntelv 300 & 600) Divva (Dvelv-300P&303P)
* Leviton: Acentli: Ate06-1Lw
* Leviton Trimatron #705W (incandescent)
0-10V Approved Dimmers
* Lutron: Nova® 0-10V : NTFTV Divva® 0-10V : DVTV
* Leviton: Decora 0-10V : IP710DL
Consult tech. service or factory for additional dimmers

* Provided: Easy-quick connector case (patent pending)

M810/MCLR8W

120V-277VAC LED 8", Non-IC, Commercial Flat Frame-in Kit
Down Light with interchangeable Reflector Trims

Catalog		Type
Project		Date
Prepared		

8" LED Commercial Flat Frame-in Kit

TRIM

* Wide beam reflector is standard. Also available narrow beam in reflector(consult with factory).



MCLR8W-HC
Specular Open Reflector

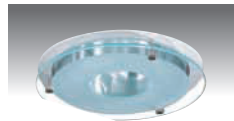
MCLR8W-B
Baffle w / Reflector

MCLR8W-BL
Baffle w /
Regressed Lens

MCLR8W-CL
Reflector w /
Regressed Lens

MCLR8W-HCW
Wall Wash w /
Reflector Plate

MCLR8W-DL
Reflector w /
Frosted Floating Lens

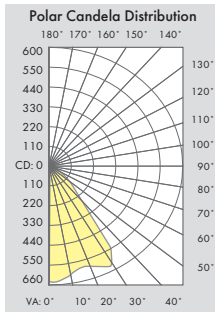


MCLR8W-DLC
Reflector with Frosted 3.5"
Center Hole Lens

* All trims are rated for damp location and regressed lens trims are wet location listed.

PHOTOMETRIC REPORT

* Contact Factory for IES File

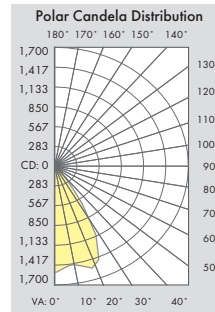


Illuminance at a Distance

Center Beam FC	Beam Width
2.0ft: 163.9 fc	3.1 ft
4.0ft: 41.0 fc	6.3 ft
6.0ft: 18.2 fc	9.4 ft
8.0ft: 10.2 fc	12.5 ft
10.0ft: 6.6 fc	15.7 ft
12.0ft: 4.6 fc	18.8 ft

Beam Spread: 63°

[MCLR8W-14-830-HC-WH]

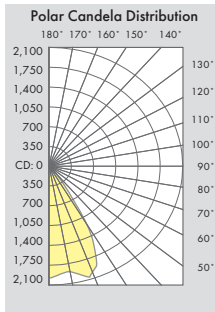


Illuminance at a Distance

Center Beam FC	Beam Width
2.0ft: 378.7 fc	2.5 ft
4.0ft: 94.7 fc	5.0 ft
6.0ft: 42.1 fc	7.5 ft
8.0ft: 23.7 fc	10.0 ft
10.0ft: 15.1 fc	12.5 ft
12.0ft: 10.5 fc	15.0 ft

Beam Spread: 64.2°

[MCLR8W-23-830-HC-WH]

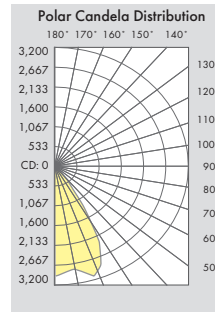


Illuminance at a Distance

Center Beam FC	Beam Width
2.0ft: 497.7 fc	2.5 ft
4.0ft: 124.4 fc	4.9 ft
6.0ft: 55.3 fc	7.4 ft
8.0ft: 31.1 fc	9.9 ft
10.0ft: 19.9 fc	12.3 ft
12.0ft: 13.8 fc	14.8 ft

Beam Spread: 63.3°

[MCLR8W-30-830-HC-WH]



Illuminance at a Distance

Center Beam FC	Beam Width
2.0ft: 732.2 fc	2.4 ft
4.0ft: 183.1 fc	4.9 ft
6.0ft: 81.4 fc	7.3 ft
8.0ft: 45.8 fc	9.8 ft
10.0ft: 29.3 fc	12.2 ft
12.0ft: 20.3 fc	14.7 ft

Beam Spread: 62.9°

[MCLR8W-45-830-HC-WH]

Ordering Information

Housing	-Watts	-CRI	Color Temp.**	Driver*	Trim	-Reflector Finish**	Baffle Finish for B & BL	Optional Metal Trim Ring Finish	
M810 = 8", Non-IC, Commercial Flat Frame-in Down Light Kit	-14 = 14W	-8 = 80	27 = 2700K	Z10 = 120/277V, 0-10V Dimming Z = 120/277V, Tri-Mode (0-10V/Triac/ELV) LUTRON LDE1 = Hi-Lume 1% EcoSystem Fade to Black Dimming LTE = Hi-Lume 1% 2-Wire Dimming 120V PEQ01 = Hi-Lume Premier 0.1% EcoSystem Fade to Black Dimming (For 23W or less only)	MCLR8W-HC	-HC = Haze Clear	-WH = White	-WH = White Plastic Trim Ring (Standard)	
	-23 = 23W	-9 = 90	30 = 3000K		MCLR8W-B	-WH = White Painted	-BK = Black	-WMR = White Metal Ring	
	-30 = 30W		35 = 3500K		MCLR8W-BL				-SN = Satin Nickel
	-45 = 45W		40 = 4000K		MCLR8W-CL				-CH = Chrome
				MCLR8W-HCW				-SF = Polished Self-Flange (for Open or Wall Wash Reflectors ONLY)	
				MCLR8W-DL					
				MCLR8W-DLC					

Example : M810-14-830-Z

MCLR8W-HC-WH

** Consult factory for other Color Temperatures and Finishes