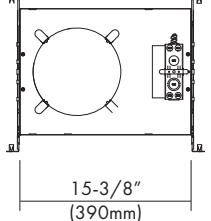
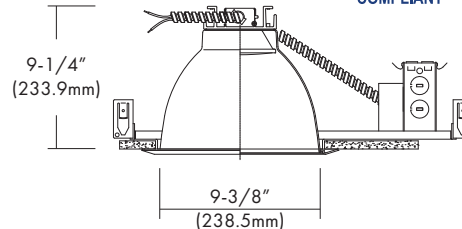


# M910/MCLR9W

120V-277VAC LED 9", Non-IC, Commercial Flat Frame-in Kit  
34W, 43W LED, 120-277V Input, Triac Dimmable Driver

Catalog #		Type
Project		Date
Prepared by		

## 9" Architectural LED



Ceiling Cut-out : 9-3/4"

## DESCRIPTION

. 9" flat frame-in kits combined with LED module and integral reflector. This is designed for use in non-insulated ceiling. Insulation material must be kept a minimum of 3" from fixture. Provided in high efficacy LED with dimmable driver and the special optical diffusion allows high lumen transmission and light uniformity.

## DESIGN FEATURES

### LED Module & Trim

- Painted, extruded aluminum heat sink designed to facilitate efficient heat dissipation for superior thermal management and reliability.
- LED engine includes LED, heat sink and lens assembly.
- Heavy gauge aluminum reflector anodized in clear haze or white paint finishes. Multiple trim styles and finishes are available.

### LED Driver

- Universal, 120~277V input, high efficacy drivers with dimming capability by ① a Triac 120V low voltage electronic dimmer switches or ② 0-10V, Triac & ELV dimmer switches.
- Drivers feature power factor >.90, THD <20% with integral thermal protection to sense over temperature or electrical issues.
- Driver mounts externally to the module to allow future replacement or upgrading if desired.
- Optional Lutron Hi-lume A-Series, LED drivers and EcoSystem 5-Series LED drivers are available. Lutron drivers provide flicker-free, smooth, continuous dimming down to 1% for Hi-lume and 5% for EcoSystem. (Contact factory for dimming system requirements)

### Electrical Connection

- Attach supply line to existing junction box through one of the knockouts provided in junction box. The existing socket whip and ballast can be set aside above the ceiling or removed completely.

### Retrokit Mounting

- Designed for use with most existing 9-1/2" - 10" aperture architectural incandescent, fluorescent and metal halide housings. Supplied with flexible metal conduit for connection to existing electrical junction box. Existing frame-in kits mounting via friction springs or clips.

### Options

- Emergency battery back-up : Available in mounted to fixture or remote, adjacent to luminaire (consult with factory for space requirements).

### Limited Warranty

- LED Module: 5 years/50K hours
- Product/Driver: 3 years

### Listing

- cETLus Wet Location
- ENERGY STAR
- California Title 24

## 9" LED Commercial Flat Frame-in Kit

SPECIFICATION	
Input Voltage	120-277VAC
Wattage (+/-5%)	14W 23W 30W 45W
Lumen (+/-5%)	1,355 2,160 2,796 4,271
Efficacy (LPW)	96.8 93.9 93.2 94.9
Beam Angle	63.2° 66.5° 66.6° 63.3°
CRI (Typical)	80, 90
CCT (Color +/-5%)	2700K, 3000K, 3500K, 4000K
Dimming	0-10V, ELV & TRIAC Optional Lutron Drivers
LED Module	5 yr/50K hr
Environment	Wet Location

### ○ Triac Approved Dimmers

- \* Lutron: NovaT (Ntelv 300&600)  
Divia (Dvelv-300P&303P)
- \* Leviton: Acenti: Ate06-1Lw
- \* Leviton Trimatron #705W (incandescent)

### ○ 0-10V Approved Dimmers

- \* Lutron: Nova® 0-10V : NTFTV  
Divia® 0-10V : DVTV
- \* Leviton: Decora 0-10V : IP710DL

Consult tech. service or factory  
for additional dimmers

\* Provided: Easy-quick connector case  
(patent pending)



## TRIM

\* Wide beam reflector is standard. Also available narrow beam in reflector(consult with factory).



**MCLR9W-HC**  
Specular Open Reflector

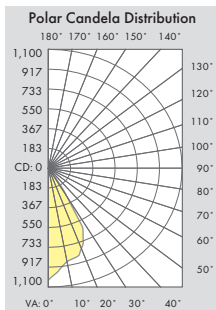
**MCLR9W-B**  
Baffle w / Reflector

**MCLR9W-BL**  
Baffled Lens w / Reflector

\*All trims are rated for damp location and regressed lens trims are wet location listed.

## PHOTOMETRIC REPORT

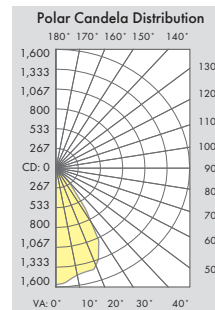
\* Contact Factory for IES File



**Illuminance at a Distance**

Center Beam FC	Beam Width
257.3 fc	2.5 ft
64.3 fc	4.9 ft
28.6 fc	7.4 ft
16.1 fc	9.8 ft
10.3 fc	12.3 ft
7.1 fc	14.8 ft

Beam Spread: 63.2°



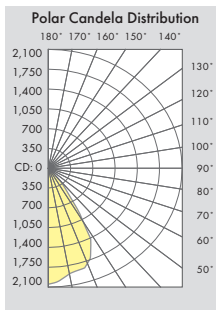
**Illuminance at a Distance**

Center Beam FC	Beam Width
394.6 fc	2.6 ft
98.6 fc	5.2 ft
43.8 fc	7.9 ft
24.7 fc	10.5 ft
15.8 fc	13.1 ft
11.0 fc	15.7 ft

Beam Spread: 66.5°

[MCLR9W-HC-14-830]

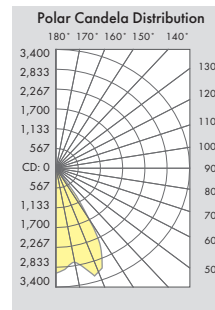
[MCLR9W-HC-23-830]



**Illuminance at a Distance**

Center Beam FC	Beam Width
511.0 fc	2.6 ft
127.7 fc	5.3 ft
56.8 fc	7.9 ft
31.9 fc	10.5 ft
20.4 fc	13.1 ft
14.2 fc	15.8 ft

Beam Spread: 66.6°



**Illuminance at a Distance**

Center Beam FC	Beam Width
747.9 fc	2.5 ft
187.0 fc	4.9 ft
83.1 fc	7.4 ft
46.7 fc	9.9 ft
29.9 fc	12.3 ft
20.8 fc	14.8 ft

Beam Spread: 63.3°

[MCLR9W-HC-30-830]

[MCLR9W-HC-45-830]

## Ordering Information

Housing	-Watts	-CRI	Color Temp.**	Driver*	Trim	-Reflector Finish**	Baffle Finish for MCLR9W-B & BL	Optional Metal Trim Ring Finish
M910 = 9" Non-IC, Commercial Flat Frame-in Down Light Kit	-14 = 14W -23 = 23W -30 = 30W -45 = 45W	-8 = 80 -9 = 90	27 = 2700K 30 = 3000K 35 = 3500K 40 = 4000K	Z10 = 120/277V, 0-10V Dimming Z = 120/277V, Tri-Mode (0-10V/Triad/ELV) LUTRON LDE1 = Hi-Lume 1% EcoSystem Fade to Black Dimming LTE = Hi-Lume 1% 2-Wire Dimming 120V PEQ01 = Hi-Lume Premier 0.1% EcoSystem Fade to Black Dimming (For 23W or less only)  * Option : Emergency (Non-IC only) -EM = Emergency Battery Backup	MCLR9W-HC MCLR9W-B MCLR9W-BL	-HC = Haze Clear -WH = White Painted	-WH = White -BK = Black	-WH = White Plastic Trim Ring (Standard) -WMR = White Metal Ring -SN = Satin Nickel -CH = Chrome -SF = Polished Self-Flange (for Open or Wall Wash Reflectors ONLY)

Example : MCLR9W-30-840-Z

HC-WH

\*\* Consult factory for other Color Temperatures and Finishes